

A Select Twelve



*Robert Arneson
Michael Cardew
Ruth Duckworth
Ken Ferguson
John Glick
Warren MacKenzie
Don Reitz
Daniel Rhodes
Paul Soldner
Toshiko Takaezu
Peter Voulkos
Marguerite Wildenhain*



*To a representative and random sampling of its American subscribers, *Ceramics Monthly* recently presented the following opinion poll: "Three world-famous potters of our time are now deceased—Shoji Hamada (1978), Bernard Leach (1979) and Maria Martinez (1980). For this and other reasons, the Editors of *Ceramics Monthly* would welcome your participation in a special survey: Who in your opinion are now the world's greatest living potters or ceramic artists?" In this portfolio are the twelve ceramists selected foremost by our readers.*

A Ceramics Monthly Portfolio

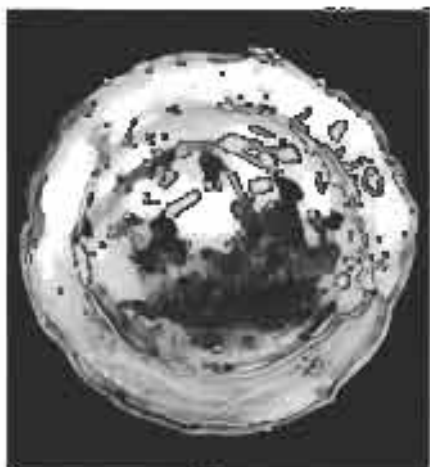
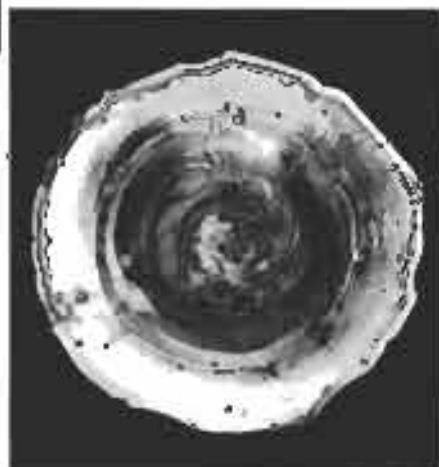
John Glick

Farmington, Michigan

Tray: Detroit, 1988

Center Yea plate, Flann Tye Pottery

**Allanred Wayne State University,
Detroit, B.F.A., 1982; Cambridge
Academy of Art, Macerfield Hills,
Michigan, M.F.A., 1983. Established
Flann Tye Pottery, 1984.**



**The Tray, 26 inches in width, rib bottom
with circular walls, glazed stoneware, 1988.**

**Center Yea plate, each 17 inches in diameter,
glazed porcelain with fabric copper slip, surface
rib marked when wet, 1988.**

**Right: John Glick blowing beads in his studio.
"There is such vast freedom beyond what one
could say are functional parameters for
interpretation. Certainly this is the
conflict of practical and personal that is
the real challenge. It is endless and it's why I
believe the functional word is so apt to
interpretation as my sculptural form would be.
Both are equally challenging and the challenge
is the reason we work."**

**Opposite page: Center serving tray and open
box, each 24 inches in length, glazed
stoneware, constructed of circular parts,
1987.**



