



*Lattice construction, 22 inches in length, glazed stoneware
with slips and oxides, 1974.*



*Thrown stoneware plate with cut and folded rim,
approximately 18 inches in diameter, with slip, oxide wash
and glaze. 1978.*



Top Plate construction, 24x30 inches, 1977.

Above Handbuilt lattice construction, 24 inches in length, sponge stamp decoration and brushwork, 1975.





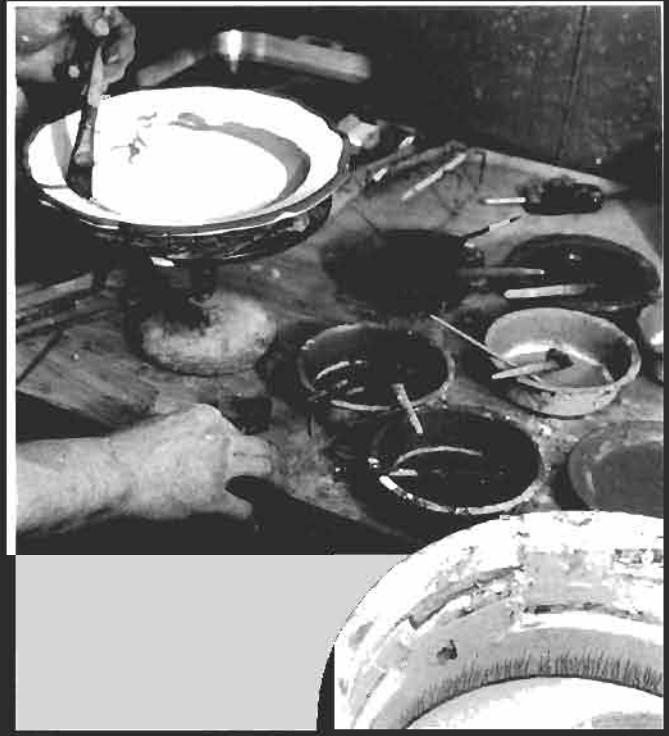
Left (clockwise from top) 11-inch dinner plate, 7½-inch bowl, bread and butter plate, salad plate, saucer and large cup; designed for Vice-President and Mrs. Mondale, 1979.

Top Rib detailing is applied to the inner rim of a freshly thrown plate.

Above In addition to patterned slip removal with a sponge, the thick coating is drawn through in multiple lines with straw, then slip trailing is added.

Top A patterned foam rubber sponge removes slip immediately after application; the fluid is thick enough to retain thin lines or impressions.

Above Thrown, slip-decorated dinner plates are allowed to dry to a trimmable state, then edges are cut and reshaped.



Top In the midst of production for the Mondale commission; twenty-four six-piece settings were completed to ensure satisfying the sixteen requested.

Above Brushes and sponge print tools for oxide wash.

Top In monthly work cycles, eight or ten dinner sets are produced each year. The seven-to eight-year waiting list is occasionally nagging, but it keeps me moving, keeps me exploring ideas.

Above Oxide wash is applied with a brush over dried glaze.



Top Edge detailing involves incising, cutting the leather-hard clay with a cheese cutter, rewetting and refining the edge with a chamois.

Above Oxide decoration, often with a five- or six-hair brush, is used to visually tie together the top glaze and lower layer of slip.

Top Approximately thirty different glazes from perhaps twelve base recipes are available in the studio for glazing.

Above Paper markers on glazed plates indicate (by color) which zone of the kiln is best for placement.



Top Waxed foot rims are dipped into grog prior to stacking; the particles act as ball bearings, easing firing shrinkage.

Top Grog is cleaned from feet during unstacking.

Above Comparing dinner plates on unloading a kiln. Fire slowly (up to thirty hours) with long periods of heavy reduction; cooling may last as long as thirty-six hours to obtain maximum glaze results.

Above Until 1973 all reserves and extras of completed dinnerware for fifty to sixty families were kept in storage—up to 800 pieces. At present a limited record collection of dinnerware is kept in the showroom attic marked with dates and customers' names.